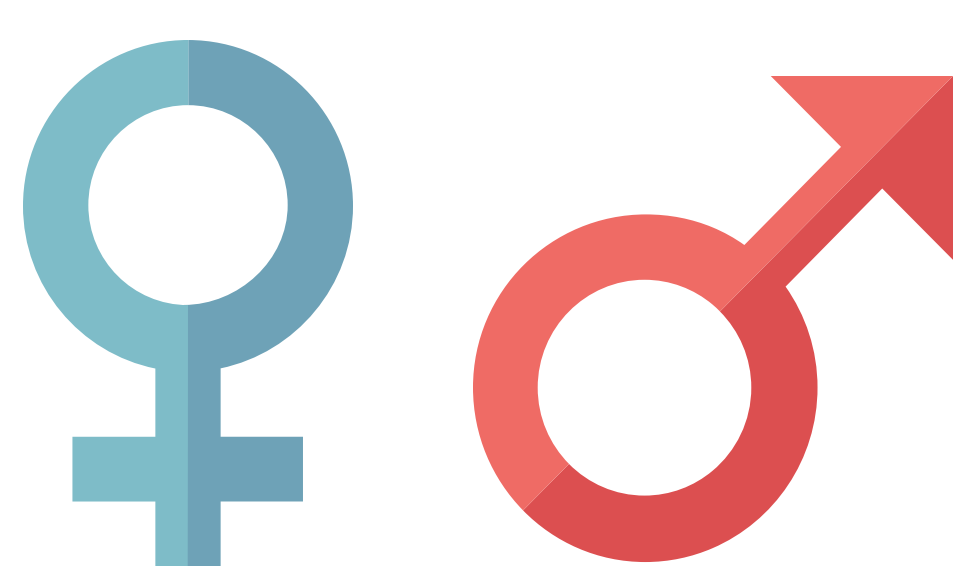




COVID-19: Gender & EiE

+ KEY POINTS TO CONSIDER



GLOBAL PANDEMICS
LIKE **COVID-19** AFFECT
WOMEN AND MEN
DIFFERENTLY



CRISES EXACERBATE
EXISTING INEQUALITIES
FOR WOMEN AND
GIRLS



WHAT ADDITIONAL CHALLENGES DO WOMEN AND GIRLS FACE?



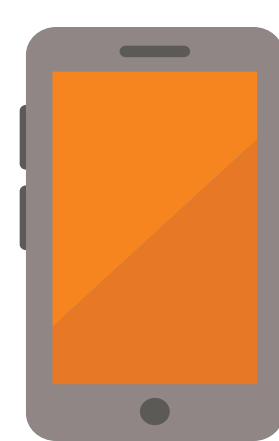
CAREGIVING

school closures increase the burden of unpaid care work and domestic labor on women and girls, leaving less time to learn



ACCESS

girls are less likely to return to school after extended school closures



TECHNOLOGY

global access to mobile internet is 26% lower for women and girls than men and boys



VIOLENCE

women and girls face an increased risk of domestic violence, child marriage, and unwanted pregnancies

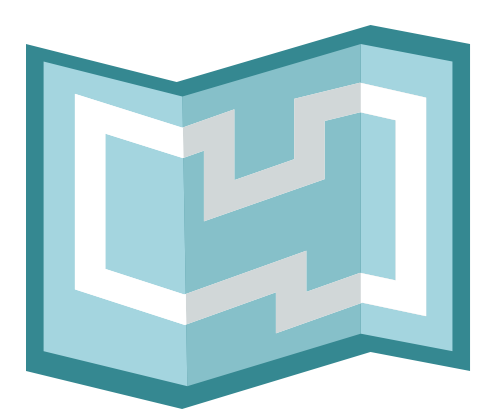


HEALTH

women's role as caregivers puts them at a higher risk of contracting infectious diseases

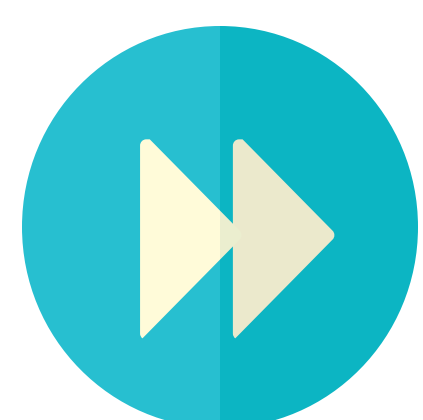


HOW CAN YOU SUPPORT?



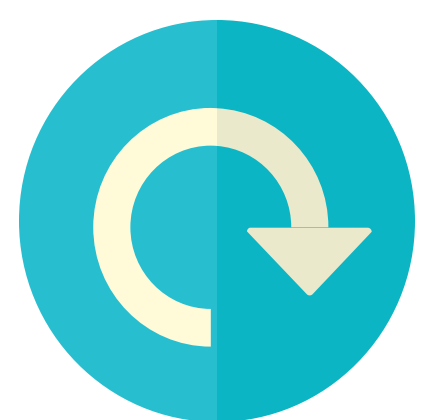
PLAN

ensure that responses take into account these challenges and their effects on women's and girls' access to and quality of education



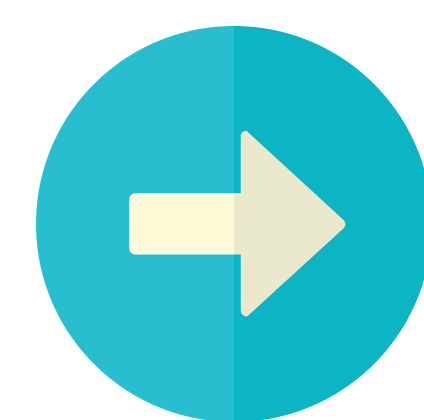
ACCOMMODATE

ensure alternative or accelerated forms of education are available for girls who are unable to return to formal schooling



ADAPT

ensure emergency distance learning programs take into account gendered access to technology, and provide alternatives



PRIORITIZE

ensure domestic violence responses (protection, health, psychosocial support) are prioritized - keep GBV referral mechanisms open



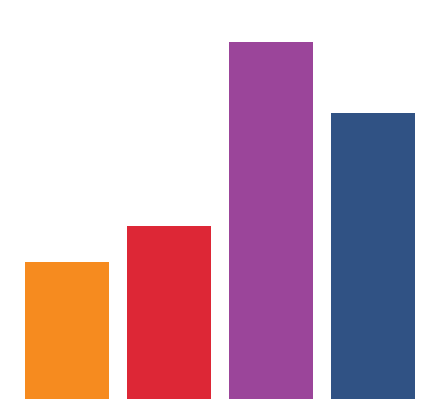
SUPPORT

address the physical and psychosocial needs of teachers, caregivers, and frontline health workers



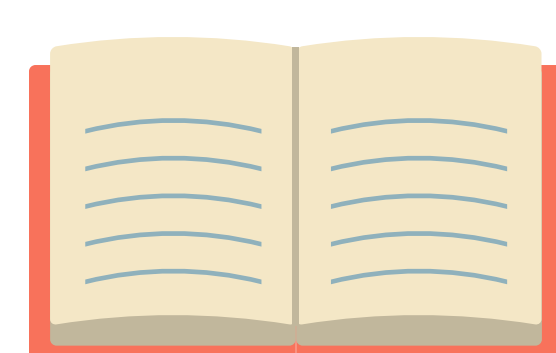
LISTEN

include women and girls in decision making on preparedness and response



MONITOR

collect age- and sex-disaggregated data on the impacts of COVID-19, including impacts on learning



LEARN

regularly take stock and learn from successes and failures of existing programs, adapt for next cycle

